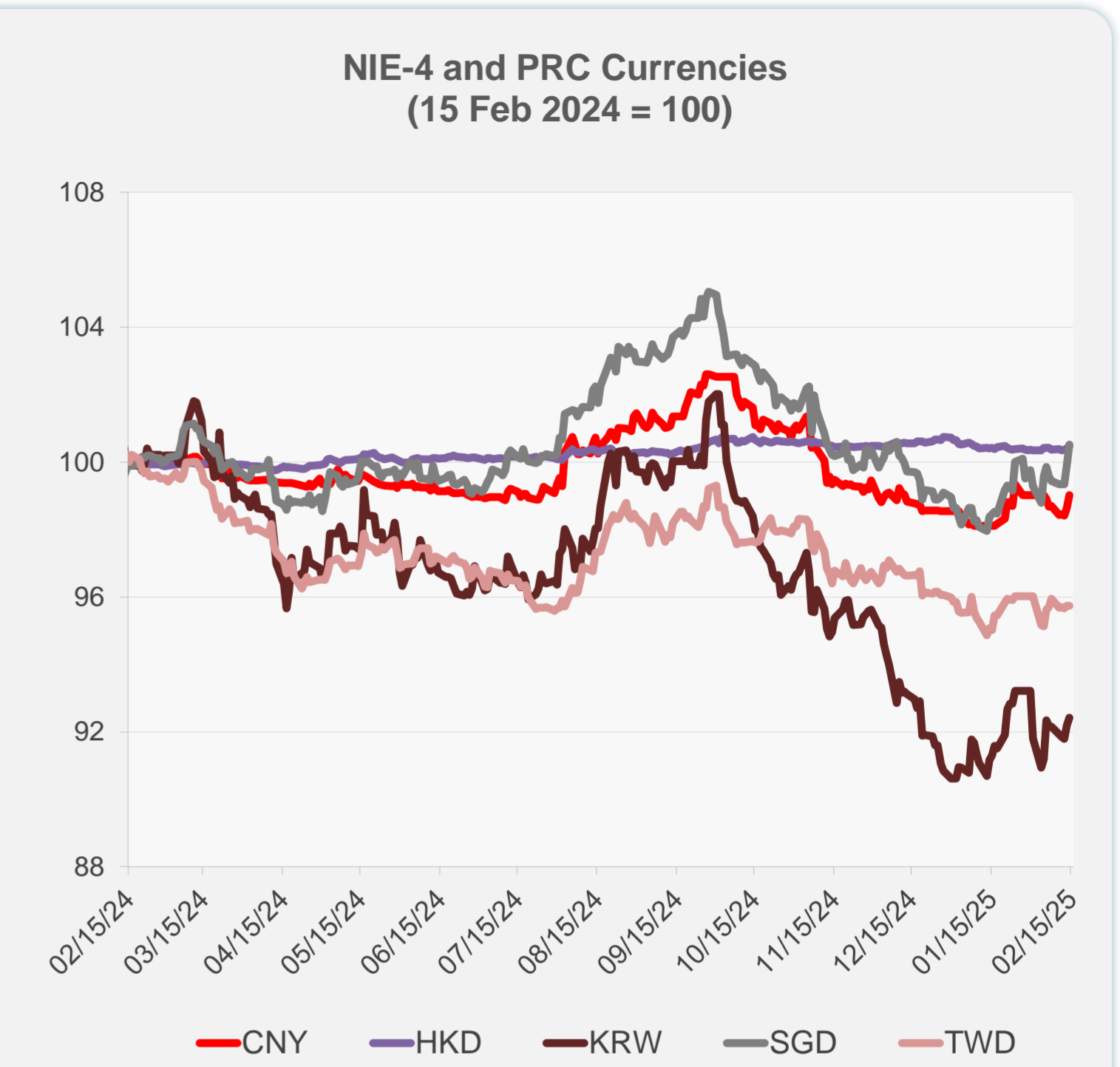
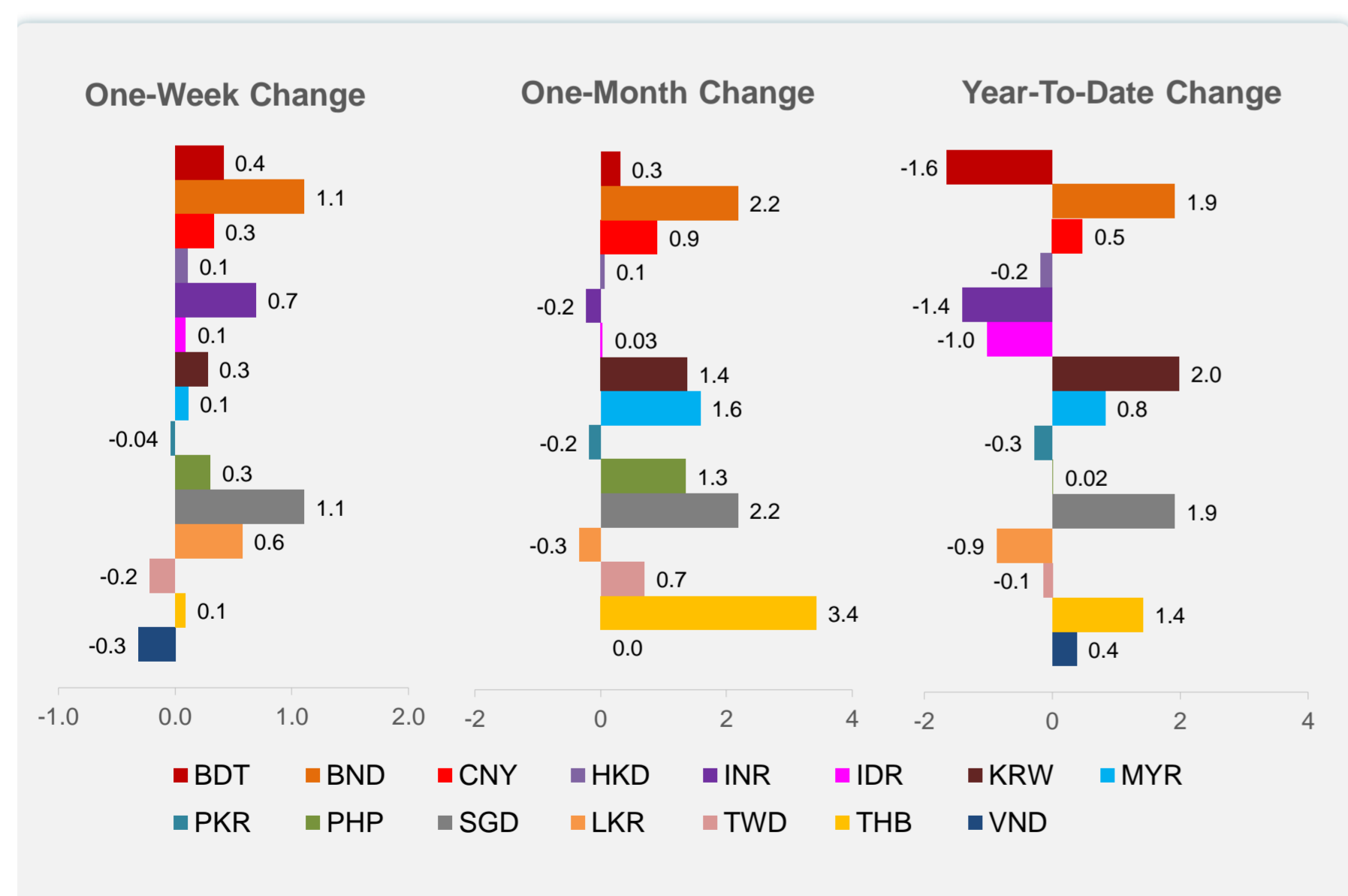
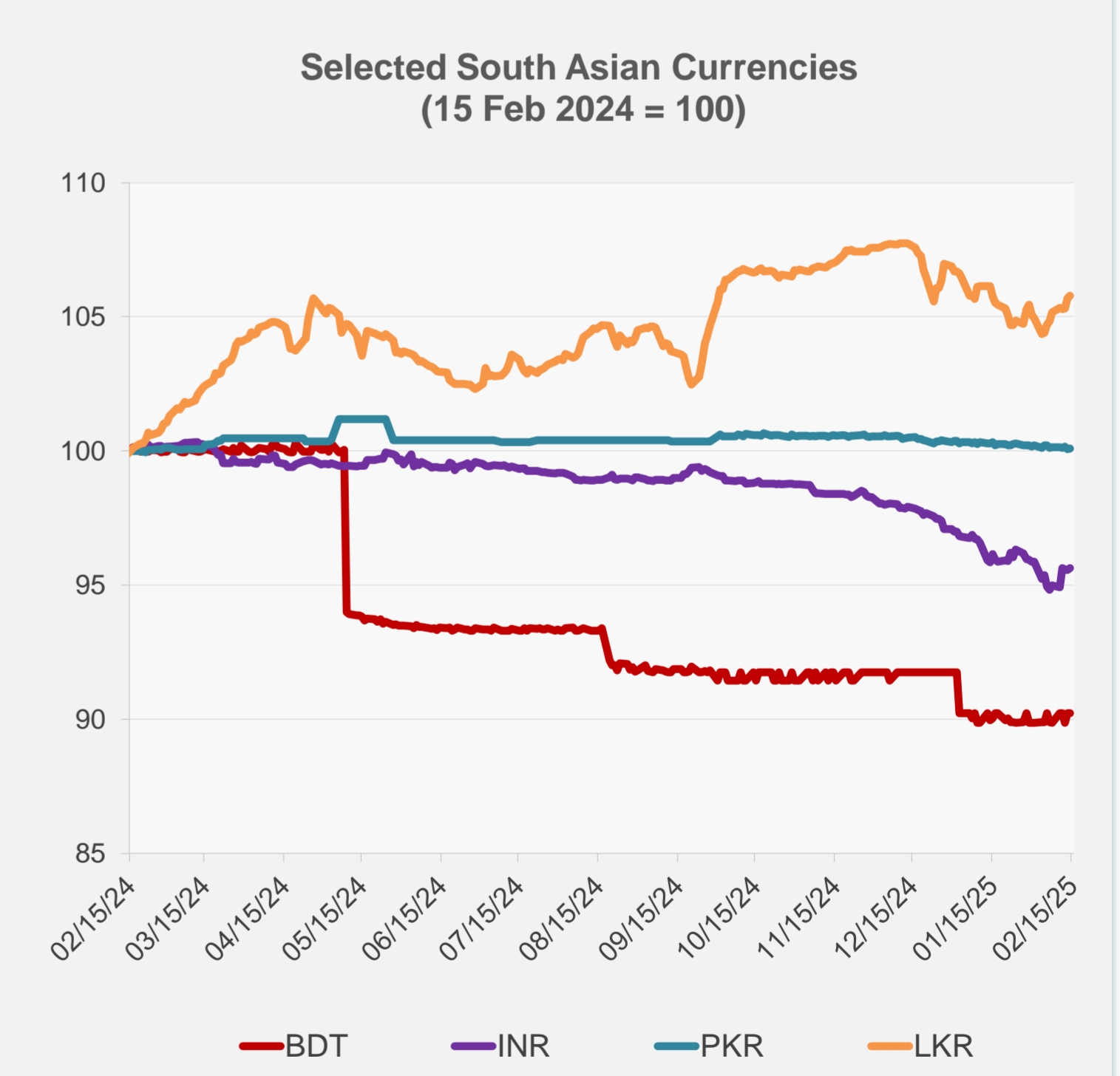
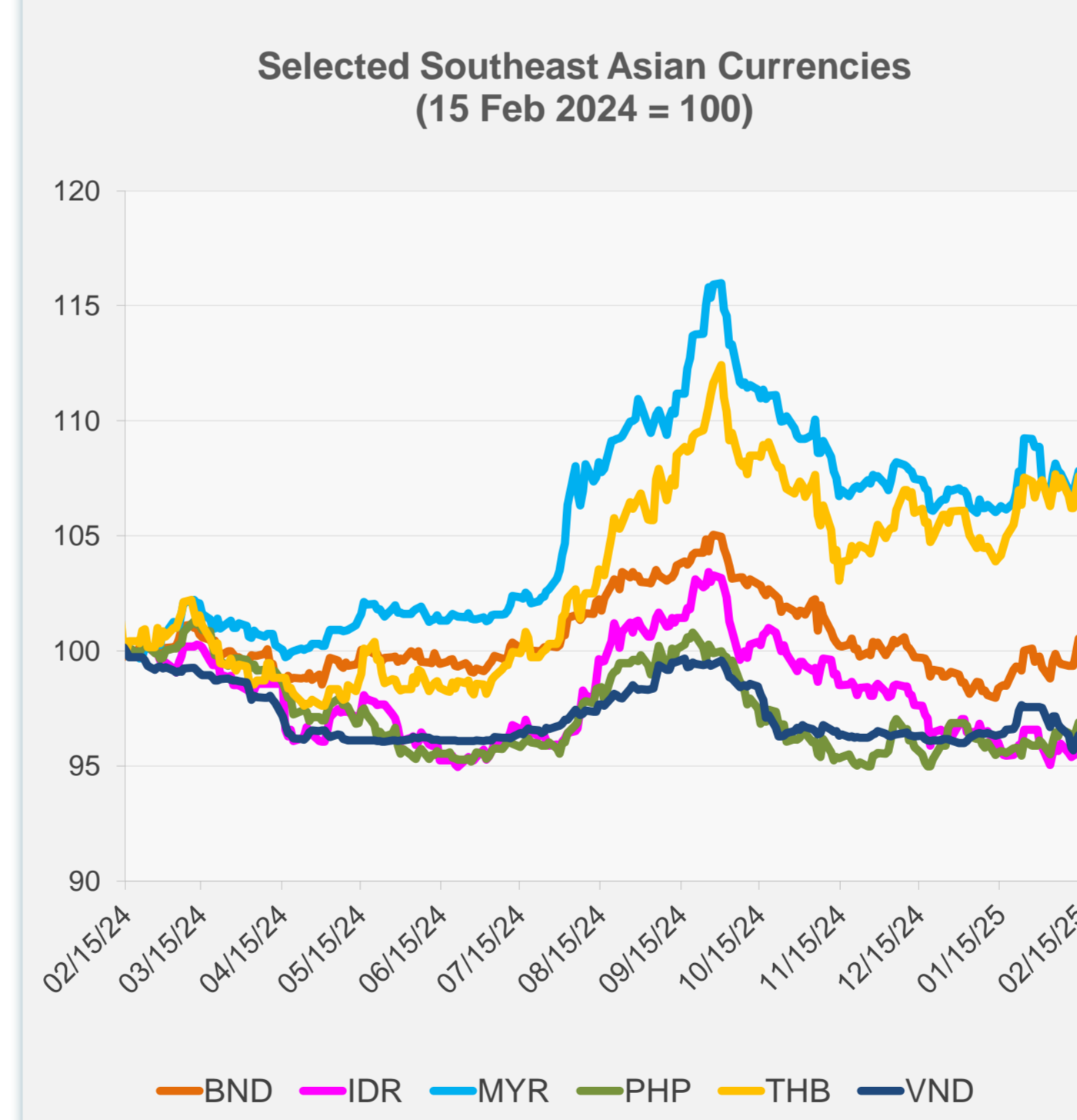


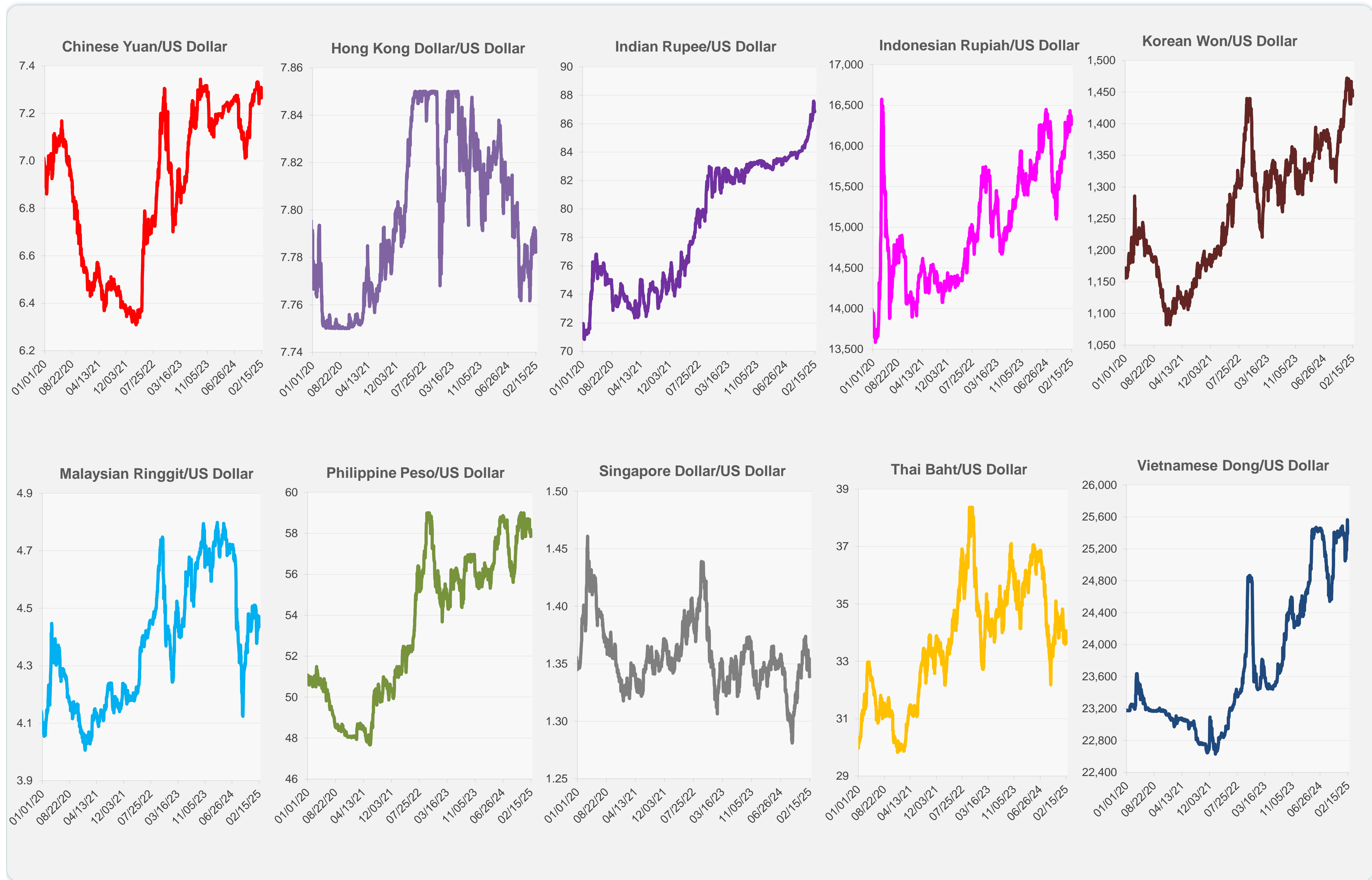
	Latest Closing	% change from Previous Day	% change from 01-Jan-25
Euro	0.95	0.71	1.48
Japanese yen (JPY)	152.17	0.64	3.28
Bangladeshi taka (BDT)	121.50	0.00	-1.65
Brunei dollar (BND)	1.34	0.62	1.91
Chinese yuan (CNY)	7.27	0.39	0.47
Hong Kong dollar (HKD)	7.78	0.07	-0.18
Indian rupee (INR)	86.83	0.08	-1.40
Indonesian rupiah (IDR)	16,260.00	0.58	-1.01
Korean won (KRW)	1,443.55	0.25	1.98
Malaysian ringgit (MYR)	4.44	0.45	0.82
Pakistan rupee (PKR)	279.15	0.04	-0.28
Philippine peso (PHP)	57.84	0.39	0.02
Singapore dollar (SGD)	1.34	0.62	1.91
Sri Lanka rupee (LKR)	295.55	0.07	-0.86
Taipei,China NT dollar (TWD)	32.83	0.00	-0.14
Thai baht (THB)	33.62	0.59	1.41
Vietnamese dong (VND)	25,390.00	0.30	0.37



NIE = Newly Industrialized Economies



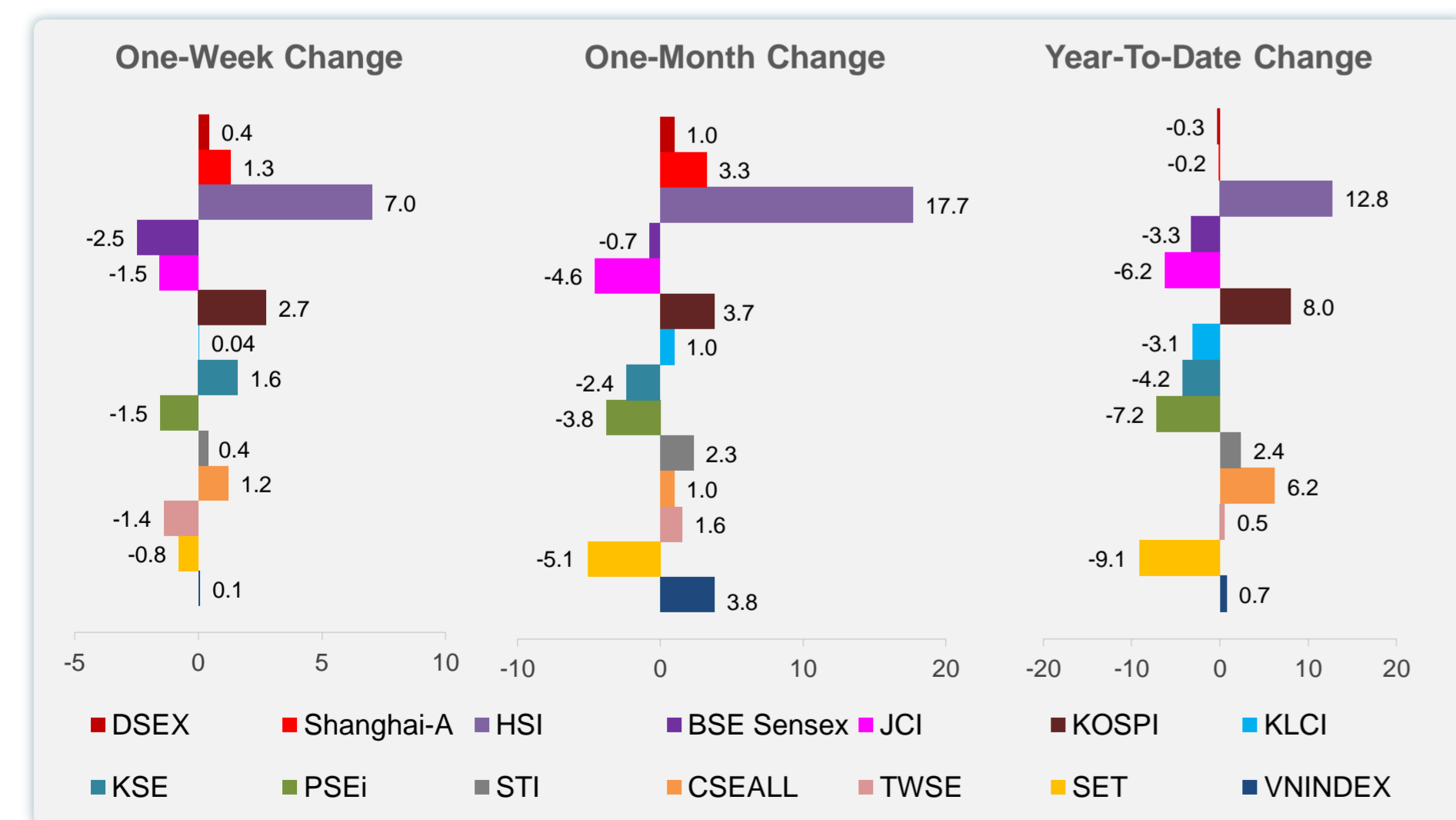
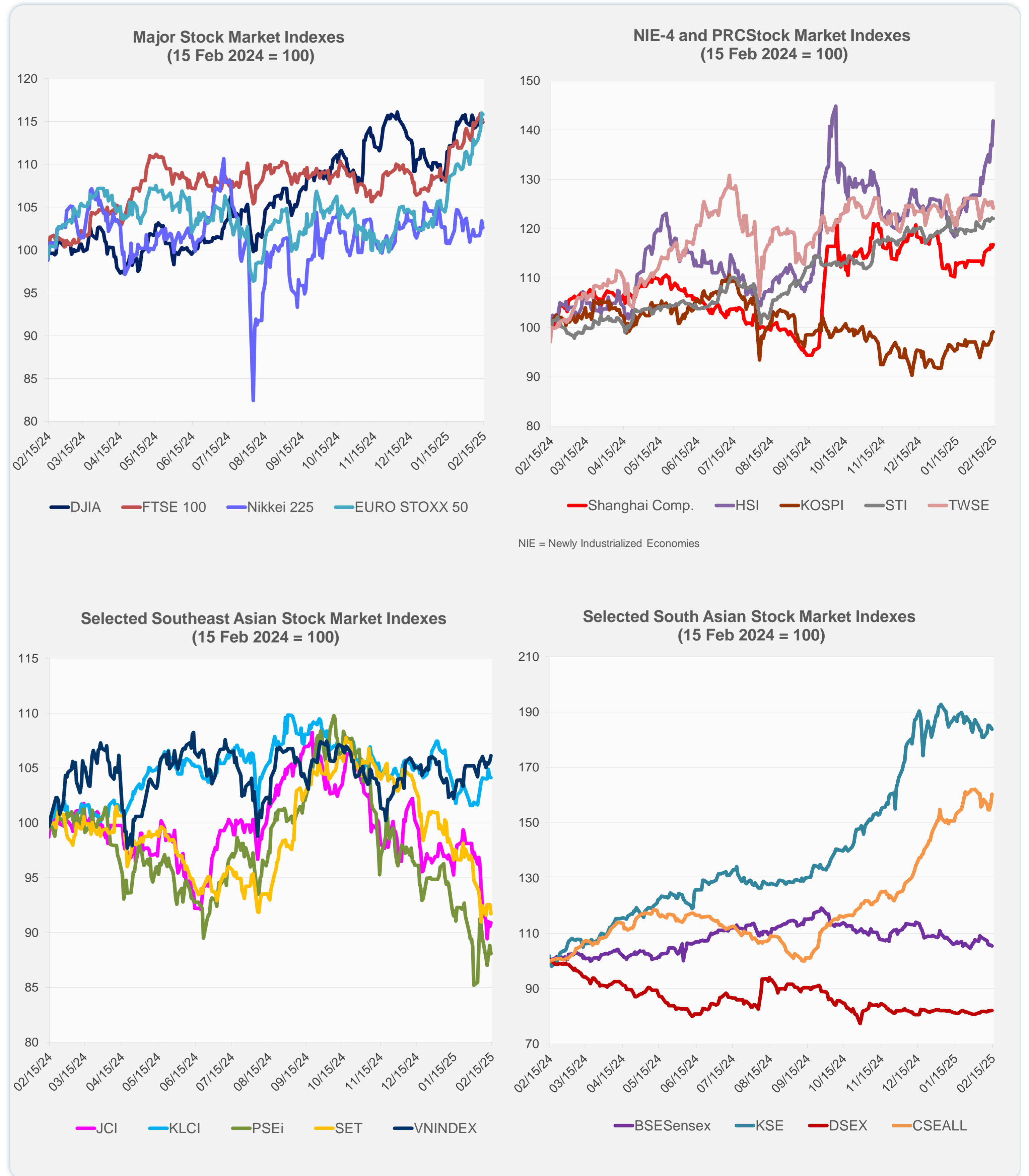
Note: Negative/Decreasing values indicate depreciation of local currency, and positive/increasing values indicate appreciation.
Source: ADB calculations using data from Haver Analytics.



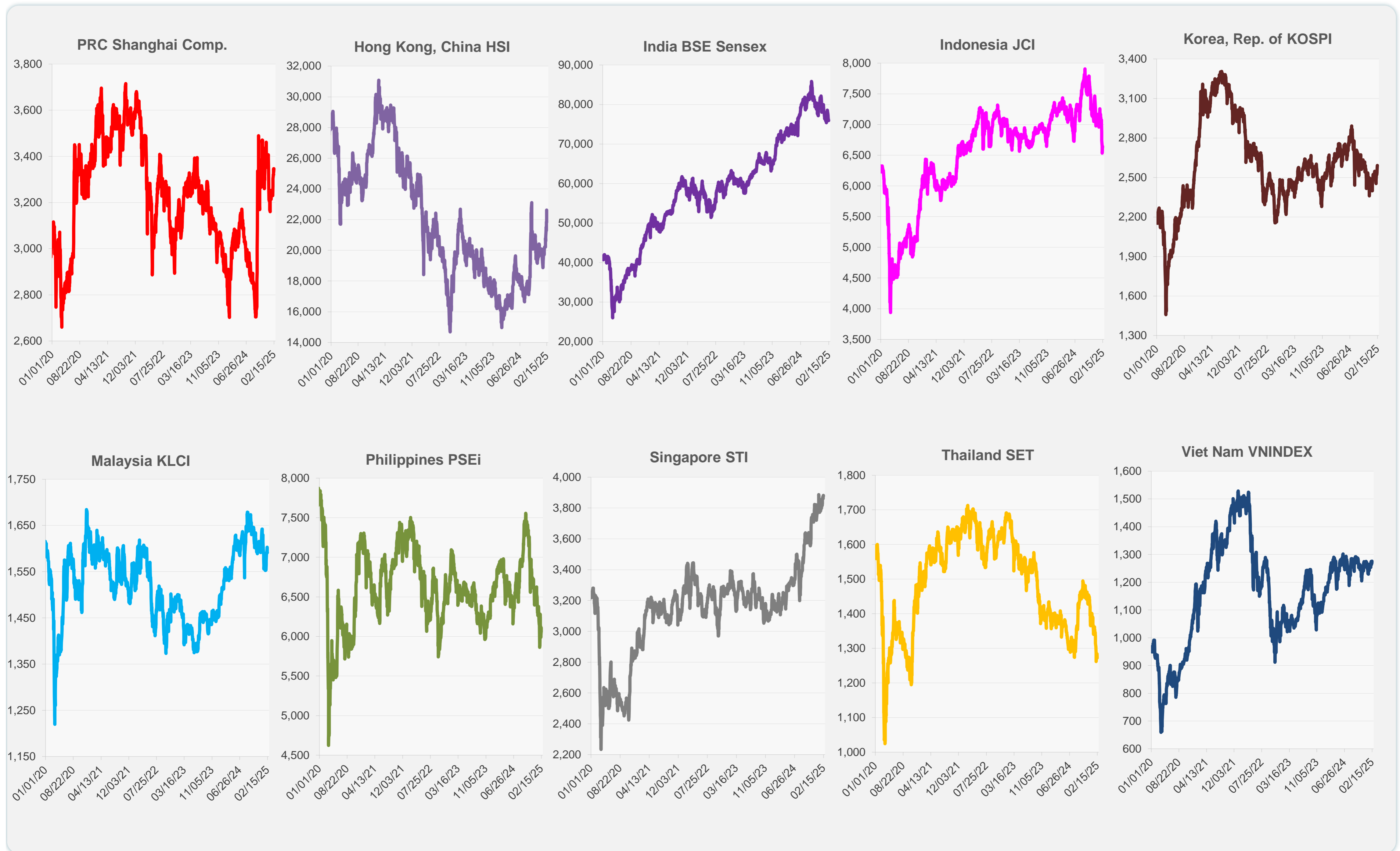
Source: Haver Analytics.

Daily Market Watch
STOCK INDEXES

	Latest Closing	% change from Previous Day	% change from 01-Jan-25
US Dow Jones Ind Avg	44,546.08	-0.37	4.71
US NASDAQ	20,026.77	0.41	3.71
US S&P 500	6,114.63	-0.01	3.96
UK FTSE 100	8,732.46	-0.37	6.84
EURO STOXX 50	5,493.40	-0.13	12.20
Japan NIKKEI 225	39,149.43	-0.79	-1.87
Bangladesh DSEX	5,201.48	0.00	-0.32
PRC Shanghai Comp.	3,346.72	0.43	-0.15
Hong Kong, China HSI	22,620.33	3.69	12.76
India BSE Sensex	75,939.21	-0.26	-3.27
Indonesia JCI	6,638.46	0.38	-6.24
Korea, Rep. of KOSPI	2,591.05	0.31	7.98
Malaysia KLCI	1,591.60	-0.04	-3.09
Pakistan KSE 100	112,085.29	-0.43	-4.21
Philippines PSEi	6,061.33	-0.85	-7.16
Singapore STI	3,877.50	-0.13	2.37
Sri Lanka CSEALL	16,936.69	2.16	6.22
Taipei, China TWSE	23,152.61	-1.05	0.51
Thailand SET	1,272.10	-0.94	-9.15
Viet Nam VNINDEX	1,276.08	0.45	0.73



Sources: ADB calculations using data from CEIC Data Company and Haver Analytics.

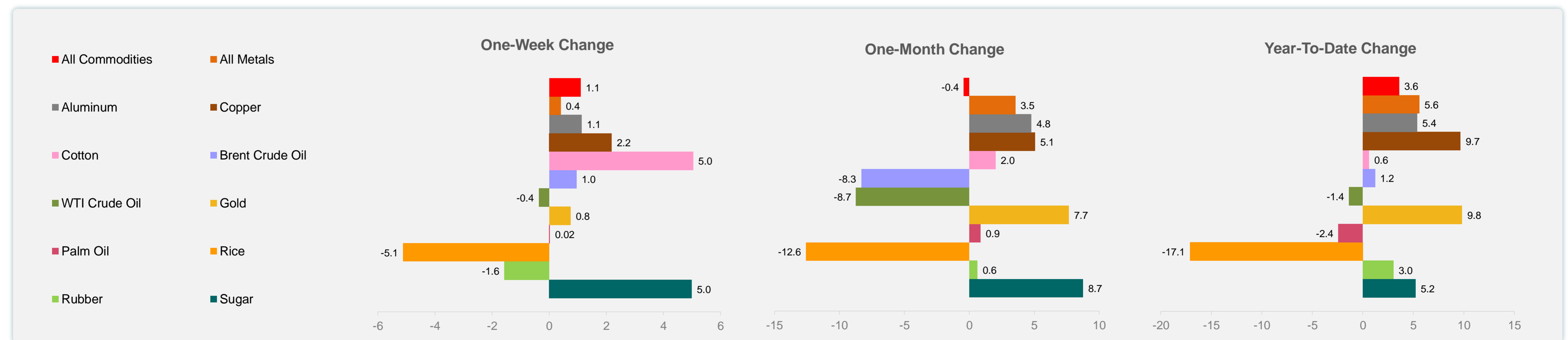
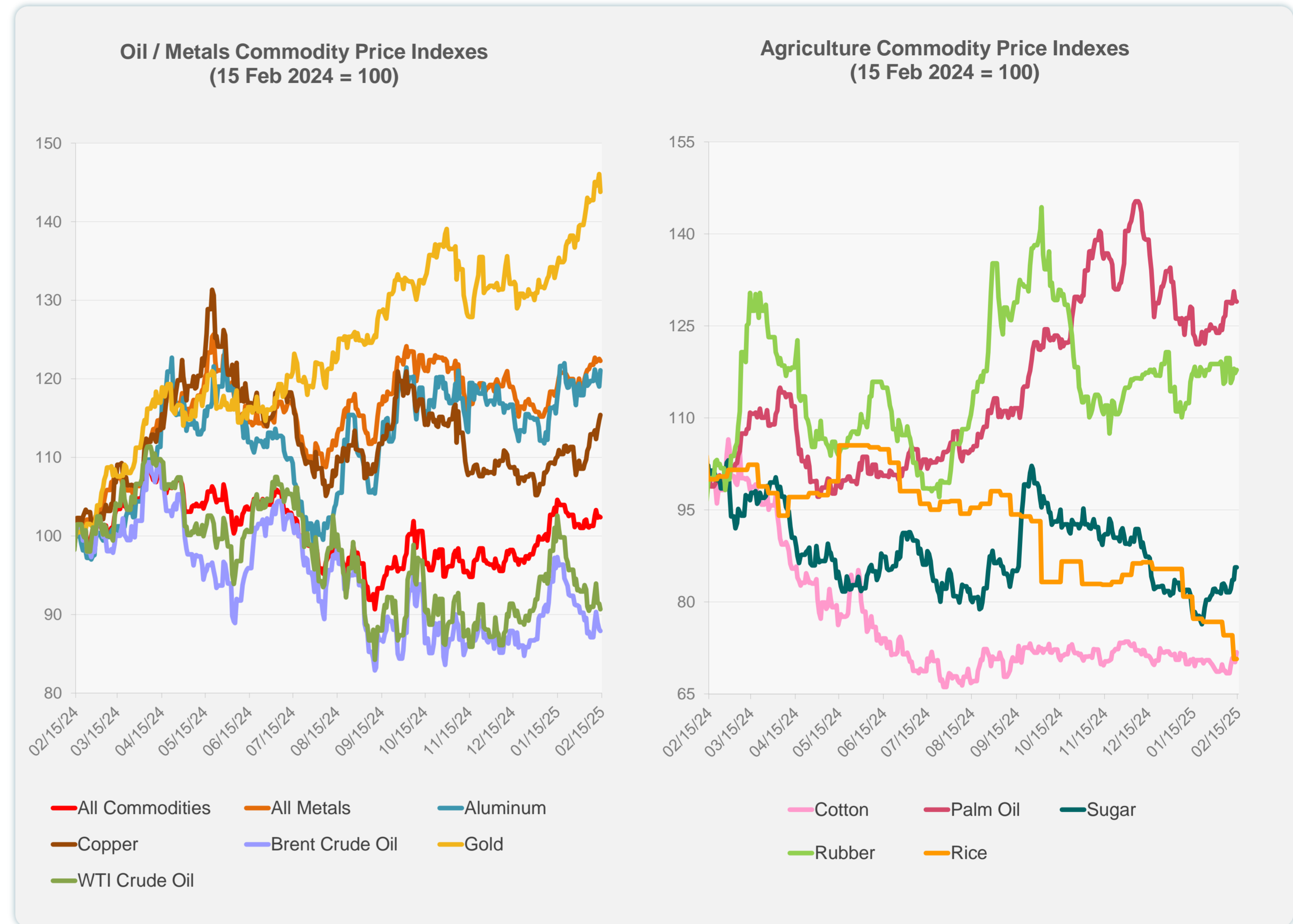


Sources: CEIC Data Company and Haver Analytics.

Daily Market Watch
COMMODITY PRICES

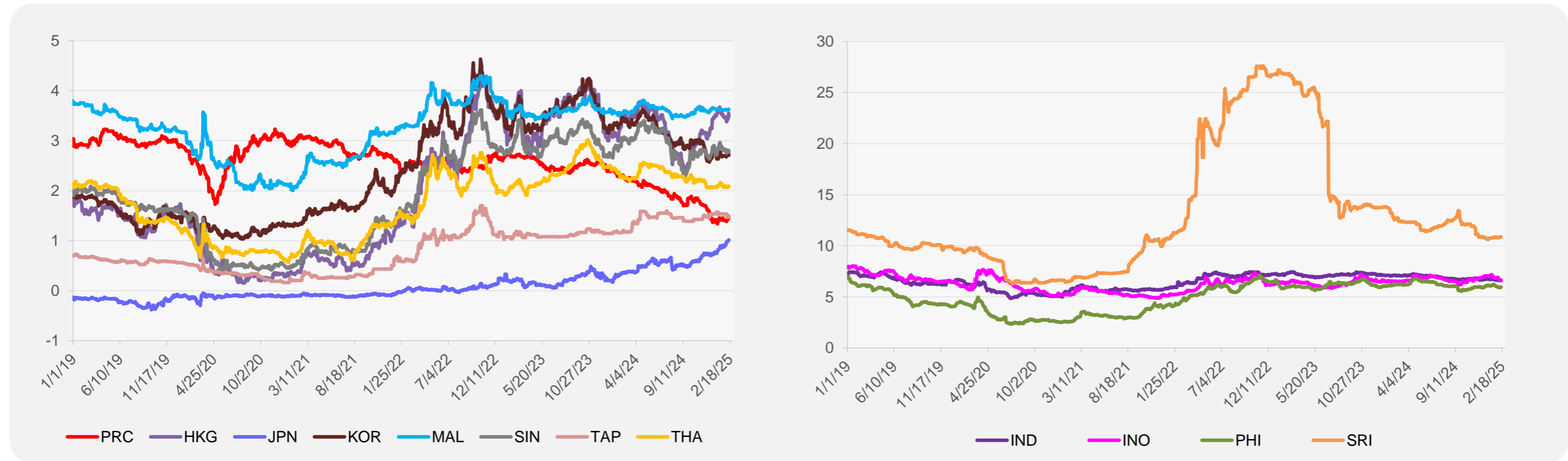
	Unit	Latest Closing	% change from Previous Day	% change from 01-Jan-25
S&P All Commodities	US\$	569.43	-0.08	3.60
S&P All Metals	US\$	324.59	-0.19	5.60
Aluminum	US\$/metric ton	2,662.79	1.75	5.38
Copper	US\$/metric ton	9,490.43	0.59	9.68
Cotton	US cents/lb	66.31	2.28	0.62
Brent Crude Oil	US\$/barrel	75.00	-0.20	1.21
WTI Crude Oil	US\$/barrel	70.74	-0.77	-1.37
Gold	US\$/troy oz	2,882.53	-1.56	9.83
Palm Oil	US\$/metric tonne	1,073.43	-0.23	-2.43
Rice ¹	US\$/metric ton	445.00	0.00	-17.13
Rubber ²	US\$/kg	244.00	0.45	3.04
Sugar	US cents/lb	19.15	0.00	5.22

¹ Latest closing price from 22 January 2025.
² Singapore Exchange, Ribbed Smoked Sheet Rubber.

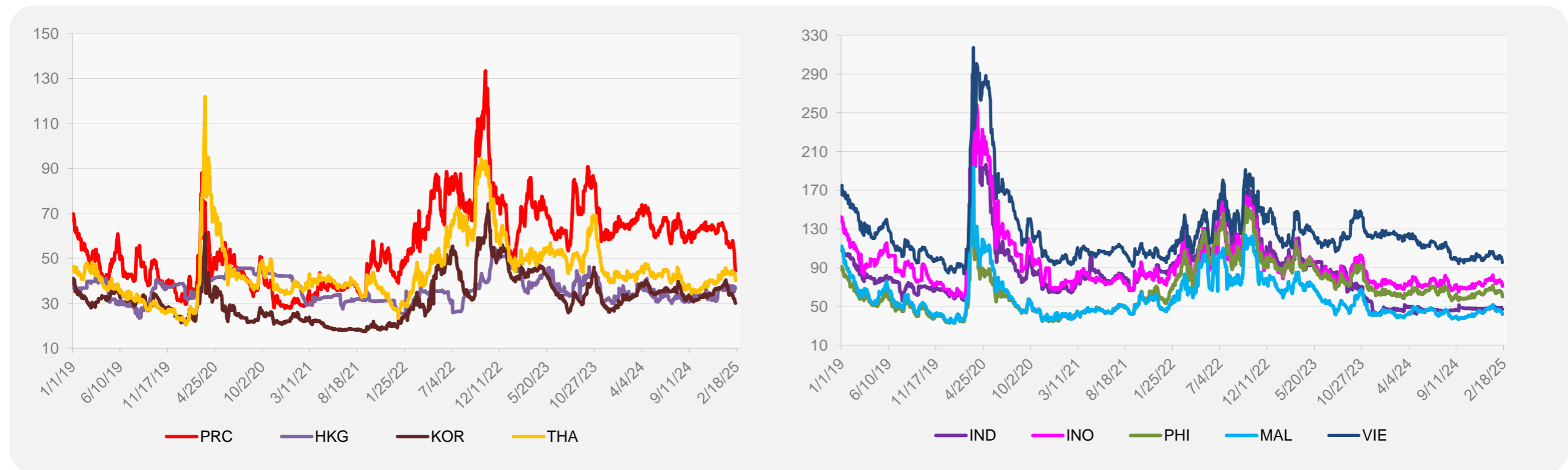


Source: ADB calculations using data from Bloomberg.

5-YEAR LOCAL CURRENCY GOVERNMENT BOND YIELDS (%)



5-YEAR CREDIT DEFAULT SWAP¹



¹ In USD and based on sovereign bonds.
Source: ADB calculations using data from Bloomberg.